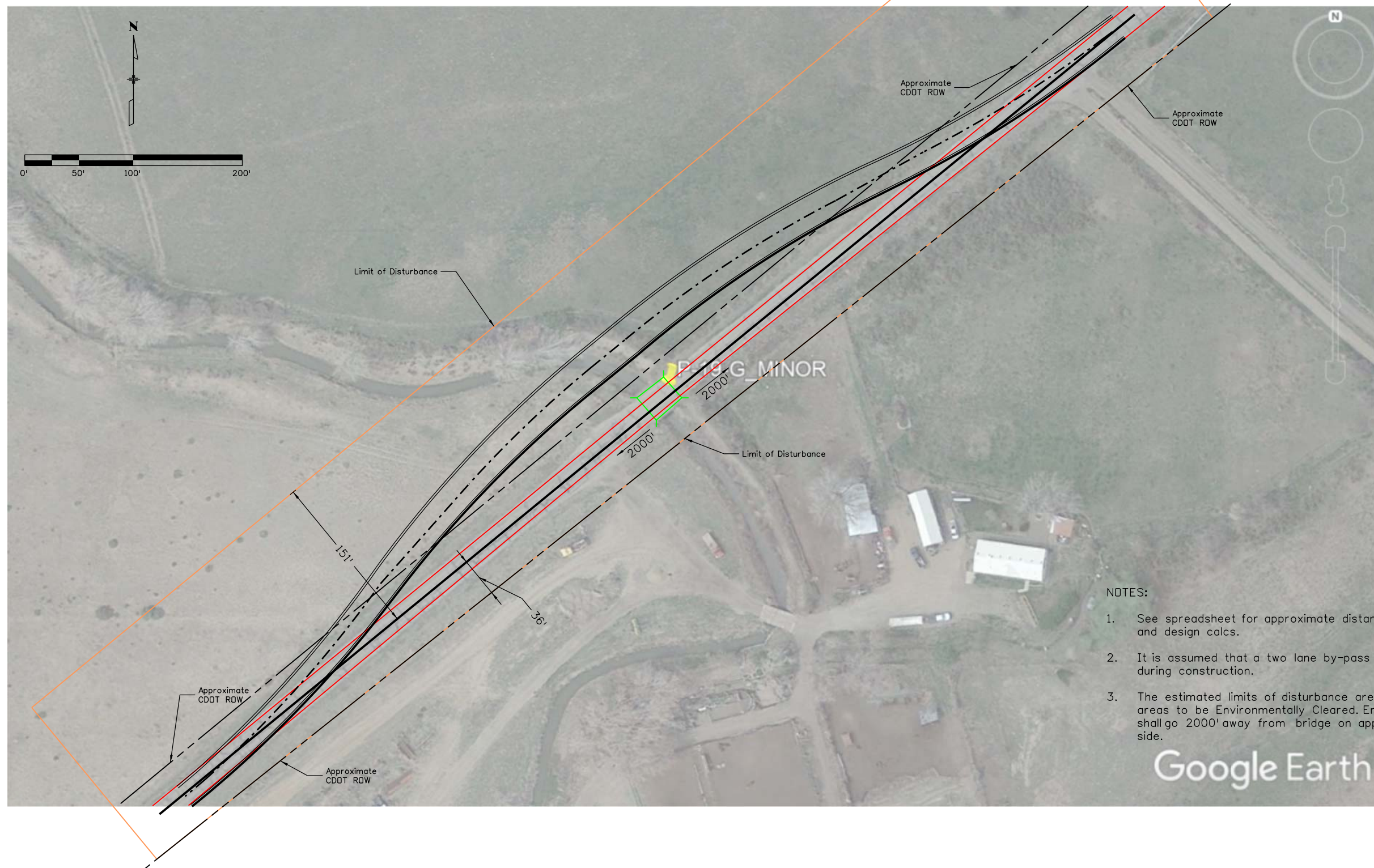


vigilpm 10:37:01 AM C:\Users\vigilpm\Documents\Projects\23558 & 23559 - Region 2 Bridge Bundle\Detours\P-19-G\_Minor\_PreliminaryDetour.dgn



**NOTES:**

1. See spreadsheet for approximate distance outside of ROW and design calcs.
2. It is assumed that a two lane by-pass detour will be used during construction.
3. The estimated limits of disturbance are the limits for the areas to be Environmentally Cleared. Environmental clearance shall go 2000' away from bridge on approach and departure side.



Print Date: 6/2/2020	
File Name: P-19-G_Minor_PreliminaryDetour.dgn	
Horiz. Scale: 1:100	Vert. Scale: As Noted
Unit Information	Unit Leader Initials

Sheet Revisions		
Date:	Comments	Init.

**Colorado Department of Transportation**  
 5615 Wills Blvd  
 Pueblo, CO 81008  
 Phone: 719-546-5753  
 FAX: 719-546-5414

**Region 2** **JLB**

<b>As Constructed</b>
No Revisions:
Revised:
Void:

<b>P-19-G_MINOR PRELIMINARY DETOUR ENVIRONMENTAL CLEARANCE AREA</b>			
Designer:	PMV	Structure	X-XX-XX
Detailer:	PMV	Numbers	X-XX-XX
Sheet Subset:	XXXXXXX	Subset Sheets:	XXX of XXX

<b>Project No./Code</b>
FBR R200-267
23559
Sheet Number <b>XXX</b>